

Electrolytic copper trolley wire

User sectors: Rail networks

Reference norm: CEI UNEL 70611-71

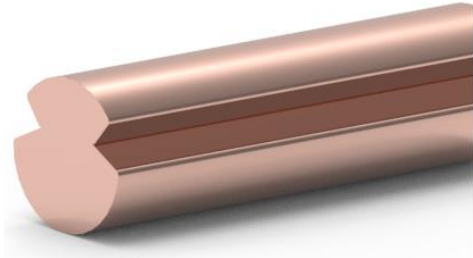
Material: CU ETP

Condition of material: Crude

Available nominal sections of the wire: 100 mm², 120 mm² or 150 mm²

Available diameters of the wire: from 11,8 mm to 14,5 mm

Packaging: Wire on wooden reels of up to about 3.000 kg



Specifications of the available formats of the wire

Nominal section (mm ²)	Theoretical section (mm ²)	Diameter (mm)	Theoretical mass (Kg/Km)	Condition of material	CAT./ PROGR. RFI
100	97,8	11,80	869,00	Crude	785/601
120	116	12,90	1031,00	Crude	785/629
150	151,7	14,50	1349,00	Crude	785/149