

Rectangular brass rod for hot forging

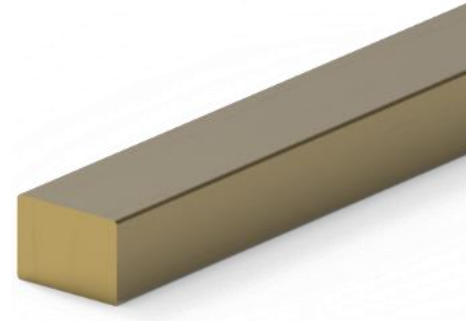
Product denomination: RECTANGULAR ROD UNI EN 12167

Condition of material: M

Tolerance class: B

Reference European norm: UNI EN 12167

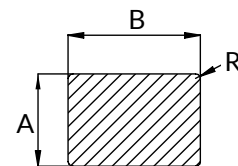
Available measures: from width 18 mm to width 110 mm and from thickness 18 mm to thickness 60 mm configurable on request



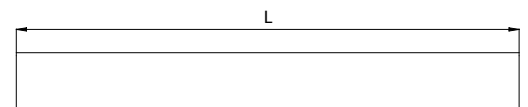
Dimensions, straightness and tolerances

| Width - B (mm) | | Width tolerance (mm) | Thickness - A (mm) | | | | |
|----------------|-----------------|----------------------|--------------------------|--------|--------|--------|--------|
| | | | From | n.a. | 18 | 30 | 50 |
| | | | To and included | 18 | 30 | 50 | 60 |
| From | To and included | Class B | Thickness tolerance (mm) | | | | |
| | | | Class B | | | | |
| n.a. | 18 | ± 0,15 | | ± 0,15 | n.a. | n.a. | n.a. |
| 18 | 30 | ± 0,22 | | ± 0,15 | ± 0,22 | n.a. | n.a. |
| 30 | 50 | ± 0,30 | | ± 0,18 | ± 0,22 | ± 0,3 | n.a. |
| 50 | 80 | ± 0,37 | | ± 0,22 | ± 0,3 | ± 0,37 | ± 0,37 |
| 80 | 110 | ± 0,45 | | ± 0,27 | ± 0,35 | ± 0,45 | ± 0,45 |

| Width (mm) | | Edge spoke |
|------------|-----------------|-----------------|
| From | To and included | Radius - R (mm) |
| n.a. | 18 | 0,5 - 1,2 |
| 18 | 30 | 0,6 - 1,8 |
| 30 | 40 | 0,7 - 2,8 |
| 40 | 60 | 0,8 - 4 |
| 60 | 110 | n.d. |



| Width (mm) | | Length - L (mm) | Length tolerance (mm) |
|------------|-----------------|-----------------|-----------------------|
| From | To and included | | |
| n.a. | 18 | 3000 | ± 50 |
| 18 | 30 | 3000 | ± 100 |
| 30 | 50 | 3000 | ± 150 |
| 50 | 110 | 3000 | ± 200 |



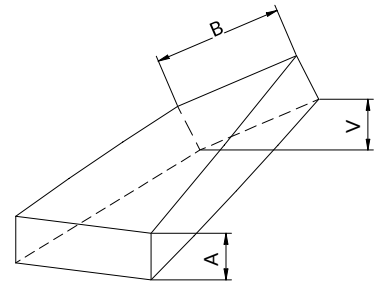
GHIDINI TRAFILERIE

| Width (mm) | | Maximum deviation from straightness - F (mm) | |
|----------------------|-----------------|--|--------------------------------|
| From | To and included | Every 400 mm | Every m of length $L \geq 1$ m |
| (and included) 18 | 110 | 1,6 | $4 \times L$ (m) |

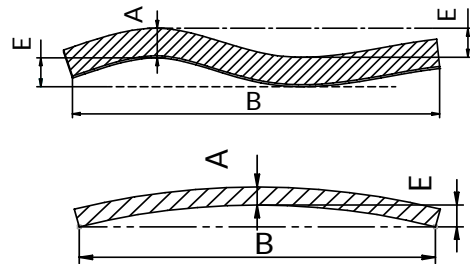


Maximum torsion and planarity

| Width (mm) | | Maximum torsion - V (mm) |
|------------|-----------------|--------------------------|
| From | To and included | |
| n.a. | 18 | 1,5 |
| 18 | 30 | 2,3 |
| 30 | 50 | 3 |
| 50 | 80 | 4,5 |
| 80 | 110 | 7 |



| Width (mm) | | Planarity tolerance - E (mm) |
|----------------------|-----------------|------------------------------|
| From | To and included | |
| (and included) 18 | 110 | 0,3 |



Finishing, surface and packaging

| | |
|-------------------|--|
| End finishing | Saw cut without burs |
| Surface condition | Raw not pickled |
| Packaging | Bundles weighing 1000 ± 100 kg tied with metal straps and, as applicable or requested, packed with Polyethylene Film |
| Identification | Adhesive label |

Available alloys

- CW617N (base alloy)
- CW612N
- CW510L

Ghidini Trafilerie S.p.A. - Via Cav. Faustino Ghidini, 8 - 25065 Lumezzane (BS) Italy
 Telefono: +39 030 871461 - Fax: +39 030 871998 - E-mail: info@ghidinitrafilerie.com
 P. IVA 02033500980 - Registro Imprese di Brescia n. iscriz. e Cod. Fisc. 01834980177
 Capitale Sociale € 16.000.000 i.v. - Website <https://www.ghidinitrafilerie.com>